

UNION COUNTY

NEW JERSEY



ucnj.org

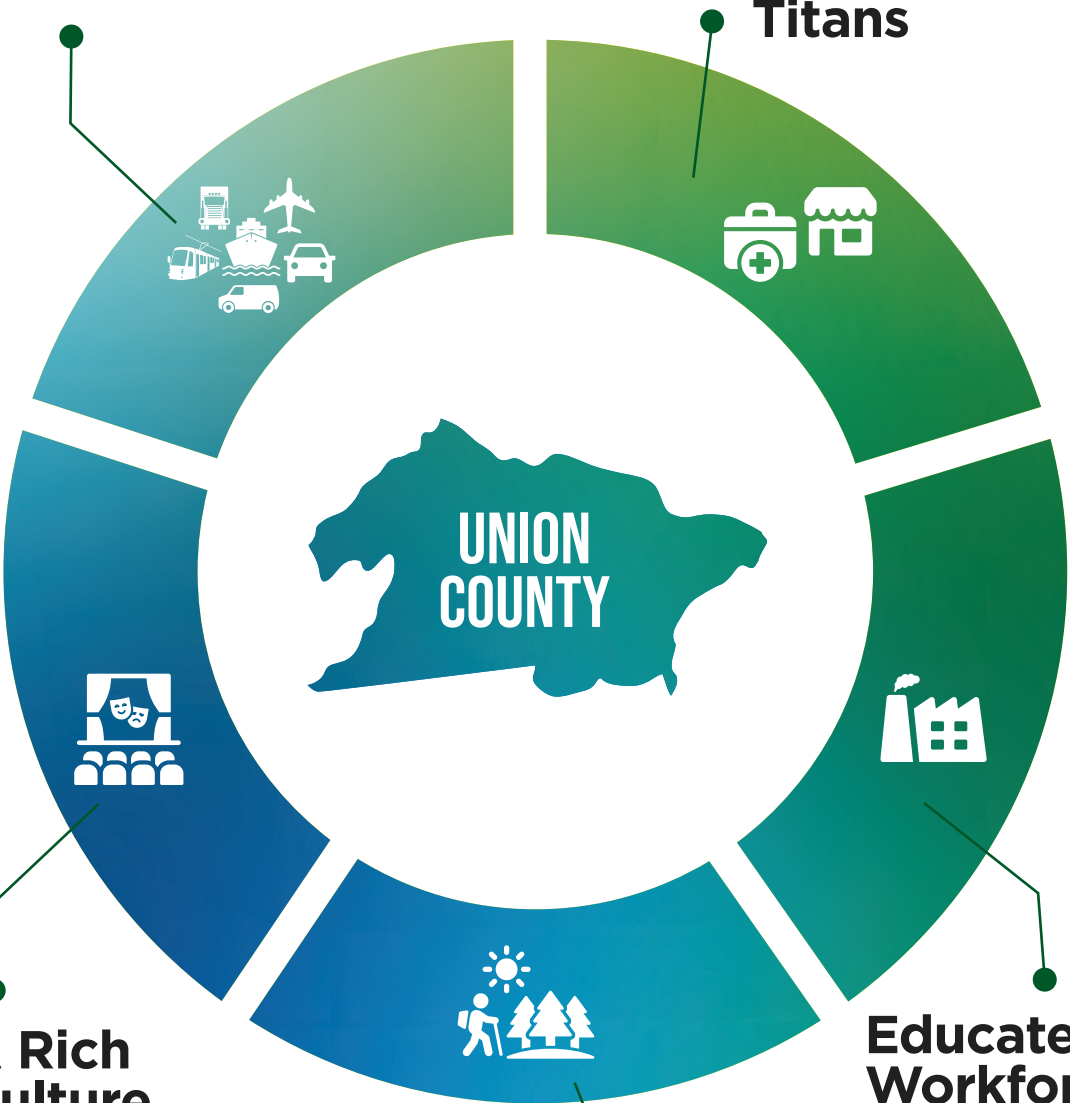


UNION COUNTY

HIGHLIGHTS

**Part of the
NY Metro Area:
Major
Transportation
and Tourism Hub**

**Thriving
Businesses,
from Vibrant
Shopping to
Pharmaceutical
Titans**



**A Rich
Culture
and History
That
Predates
America
Itself**

**High Quality
Recreation
and Nearly
40 Premier
County Parks**

**Educated
Workforce
and
Nationally
Recognized
Schools**



Public Bus Routes

More than **25** public bus routes

4 Major Passenger Rail Lines

- Northeast Corridor
- North Jersey Coast Line
- Raritan Valley Line
- Morristown and Essex Line

Major Highways

6 major highways including the Garden State Parkway and New Jersey Turnpike

Port of New York and New Jersey:

the second-busiest port in America, with an estimated **4.9 million** containers moved annually

Independent Freight /Trucking Companies

Over 50 based in Union County

Minutes from New York City:

Proximity to major commercial hubs

Airports

- Newark Liberty International Airport, serving **49 million** million passengers a year, with the brand-new Terminal A located wholly within Union County
- Linden Municipal Airport

Businesses & Employees



**Total Employees
(2022) 292,493**

**Total Number of Businesses
(2022) 14,260**



Top Sectors



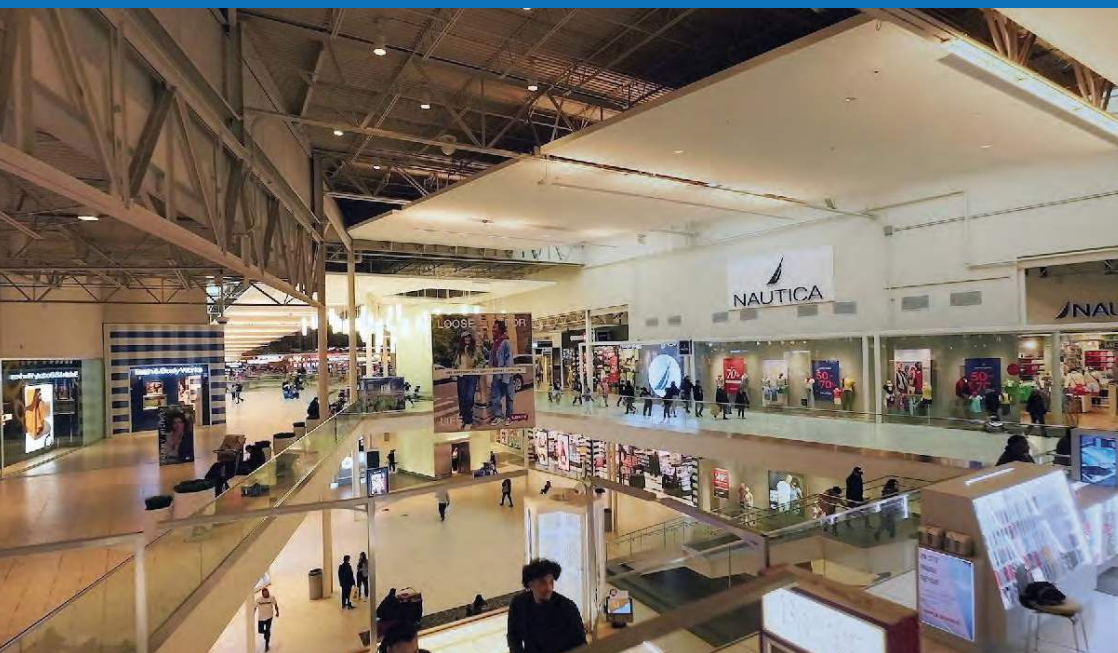
Top Employers by Number of Establishments

Construction
1,100 companies

Professional & Technical Services
1,000 firms

Retail Trade
1,000 establishments

Health, Medical, and Social Care
950 facilities



Top Employers



Top Employers by Number of Employees

RWJBarnabas Health
(Various locations / 4,106)

Merck & Co.
(Rahway / 4,000)

Overlook Medical Center
(Summit / 3,775)

Blue Apron
(Linden / 2,343)

Summit Health
(Various locations / 1,800)

Source: Union County Economic Development Corporation





Trade Zones:

Union County's participation in Foreign Trade Zones (FTZ) #49 and #235 offers significant advantages for business engaged in international trade, including duty deferral, reduction, or elimination, decreasing operating costs and enhancing competitiveness. In addition, Elizabeth boasts New Jersey's largest Urban Enterprise Zone (UEZ), which reduces sales tax to 3% for nearly 1,000 businesses and has created over \$1 billion in local economic development.

Proximity to Port Elizabeth:

The strategic location near one of the busiest ports in the U.S. ensures efficient logistics and supply chain operations, further attracting businesses that depend on international shipping and trade.

Business Resources:

- Local Chambers of Commerce
- New Jersey Business Action Center
- New Jersey Economic Development Authority
- Small Business Development Centers
- Union County Economic Development Corporation (UCEDC)
- Union County Workforce Development Board

Education and Income Data



High School Graduate or Higher (2019-2023): 86.3%

Median Household Income (2023): \$101,146

The synergy between prime geographic location, proximity of major economic activity and top-tier educational institutions creates an environment ripe for business.

Source: US Census Bureau





Top Educational Institutions

While New Jersey is already known for having some of the nation's best public and private schools, Union County extends that reputation with a diverse cohort of career and technical institutions—many of which have earned Blue Ribbon awards and are ranked among the most elite in America. Strong partnerships facilitate the recruitment of top local talent by a wide swath of employers.

Colleges, Universities, and Post-Secondary:

- Kean University
- UCNJ Union College of Union County, NJ
- Lincoln Tech
- Union County Vocational-Technical Adult School (Apprenticeship, Post-Secondary, and Continuing Education)

Vocational-Technical High Schools:

- Academy for Allied Health Sciences
- Academy for Global Logistics
- Academy for Information Technology
- Academy for Performing Arts
- Union County Magnet High School for Science, Mathematics, and Technology
- Union County Vocational-Technical High School (UCTECH)

History, Culture and Recreation



History

Union County's history reflects the very story of America. Long before European settlement, the Lenni Lenape people cared for this land. Later, Dutch and English settlers established colonial farms here in one of the original thirteen colonies. During the Revolutionary War, battles for independence were fought on our soil, and local leaders helped shape the U.S. Constitution.

Over the centuries, Union County grew alongside the nation—shaped by waves of immigration, rapid industrial development, and community resilience. Our residents have served bravely in every conflict, from the Civil War through two World Wars. Innovation also thrived here, with Bell Labs alone producing eleven Nobel Prize winners and developing the first transistor.

From government and civil rights to science, industry, entertainment, and sports, the contributions of Union County's citizens embody the diverse spirit of America itself.

Culture

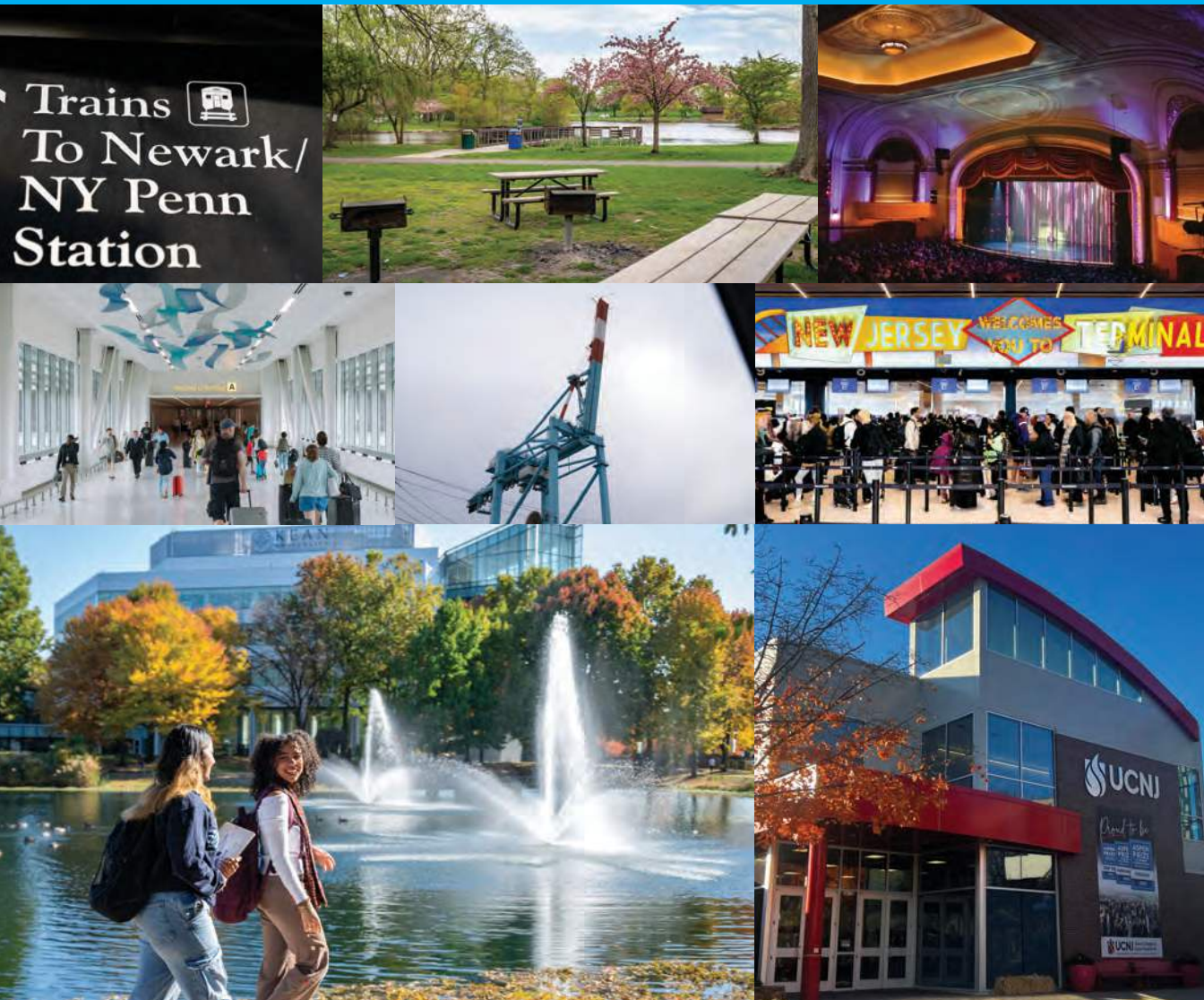
Countless annual cultural celebrations, a thriving restaurant scene, and a diverse assortment of theaters including the Union County Performing Arts Center and Hamilton Stage (Rahway), Wilkens Theatre (Kean University), the Ritz (Elizabeth), and the Rialto Center for Creativity (Westfield).

Recreation

Encompassing nearly 40 parks across 6,200+ acres, Union County has recreation options for everyone—including athletics, equestrianism, summer camps, and more. Our premier properties include the lush Galloping Hill and Ash Brook Golf Courses, Warinanco Park—designed by Frederick Olmstead, the landscape architect behind Central Park—and the state-of-the-art Trailside Nature and Science Center.

The government of **Union County** provides many services for more than half a million residents and all 21 of the County's municipalities. Our County operates nearly 40 parks, maintains more than 176 miles of road, provides services to senior citizens and individuals in need, coordinates critical public safety operations, and more.

An elected Board of County Commissioners is the legislative body responsible for the County's policies and budget. This Board is comprised of nine Commissioners, who are elected at-large and serve terms of three years. The Board holds regular public meetings, and also appoints a County Manager, who oversees the County's day-to-day operations.



UNION COUNTY



**Union County Department
of Economic Development**
(908) 527-4802



BROUGHT TO YOU BY THE

UNION COUNTY
BOARD OF COUNTY COMMISSIONERS

Department of Economic Development

Newark Airport photo on front cover courtesy of Munich Airport NJ/EWR Terminal A.

Page 4 bottom image courtesy of The Connell Company.

Page 5 bottom photo courtesy of The Mills at Jersey Gardens.



120